

THE BROOK HOUSE INQUIRY

DETAILS REQUESTED UNDER RULE 9 OF THE INQUIRY RULES 2006

Staff List and Organograms

1. This document has been prepared in order to address the following requests contained within the Inquiry's request under Rule 9 of the Inquiry Rules 2006 dated 4 May 2020:
 - a. *A(i) An organogram of the structure of Home Office and PSU personnel working within and in roles directly relating to Brook House IRC during 2017, including staff hierarchy and an explanation of relationships with G4S.*
 - b. *A(ii) A list of the names and contact details of such staff working during 2017 including job titles, job descriptions and period in role.*
2. A series of organograms has been produced which set out the structure of the Home Office (including PSU) personnel working within and in roles directly relating to Brook House IRC during 2017 [Annex 1]. "
3. The list of staff has also been produced in a table format [Annex 2].

The structure of relevant Home Office and PSU roles in 2017

This document is produced in response to the Inquiry's request under Rule 9 of the Inquiry Rules 2006 dated 4 May 2020 for "An organogram of the structure of Home Office and PSU personnel working within and in roles directly relating to Brook House IRC during 2017, including staff hierarchy and an explanation of relationships with G4S". The level of detail requested by the Inquiry does not fit workably within a single organogram, and the structure and personnel under went changes during 2017. The following are the available historic and reconstructed organograms for those parts of the Home Office which appear relevant to the request.

A separate list of those staff roles which appear relevant to this request, including an explanation of relationships with G4S where applicable, is provided separately.

1. **Home Office** organisational chart (as at March 2020, for comparison)
2. **Home Office** reconstruction of relevant senior leadership (2017)
3. **Policy** reconstruction of relevant roles (2017)
4. **Professional Standards Unit** (April 2017)
5. **Immigration Enforcement** senior leadership team organogram (April 2017)
6. **Immigration Enforcement** senior leadership team organogram (November 2017)
7. **Detention & Escorting Services (DES)** (May 2017)
8. **Detention & Escorting Services (DES)** (October 2017);
9. **DES Risk & Assurance Team** (November 2016)
10. **DES Risk & Assurance Team** (October 2017)
11. **DES Operations** (2017)
12. **DES Portfolio Team** (June 2017)
13. **Brook House IRC: DES Operational staff** (June 2017)
14. **Brook House IRC: Pre-departure Teams** (2017)
15. **Home Office Commercial Directorate** (April, May, July 2017)

Annex 1

Sensitive/Irrelevant

Sensitive/Irrelevant

Sensitive/Irrelevant

Sensitive/Irrelevant

Sensitive/Irrelevant

Sensitive/Irrelevant

Sensitive/Irrelevant

Sensitive/Irrelevant

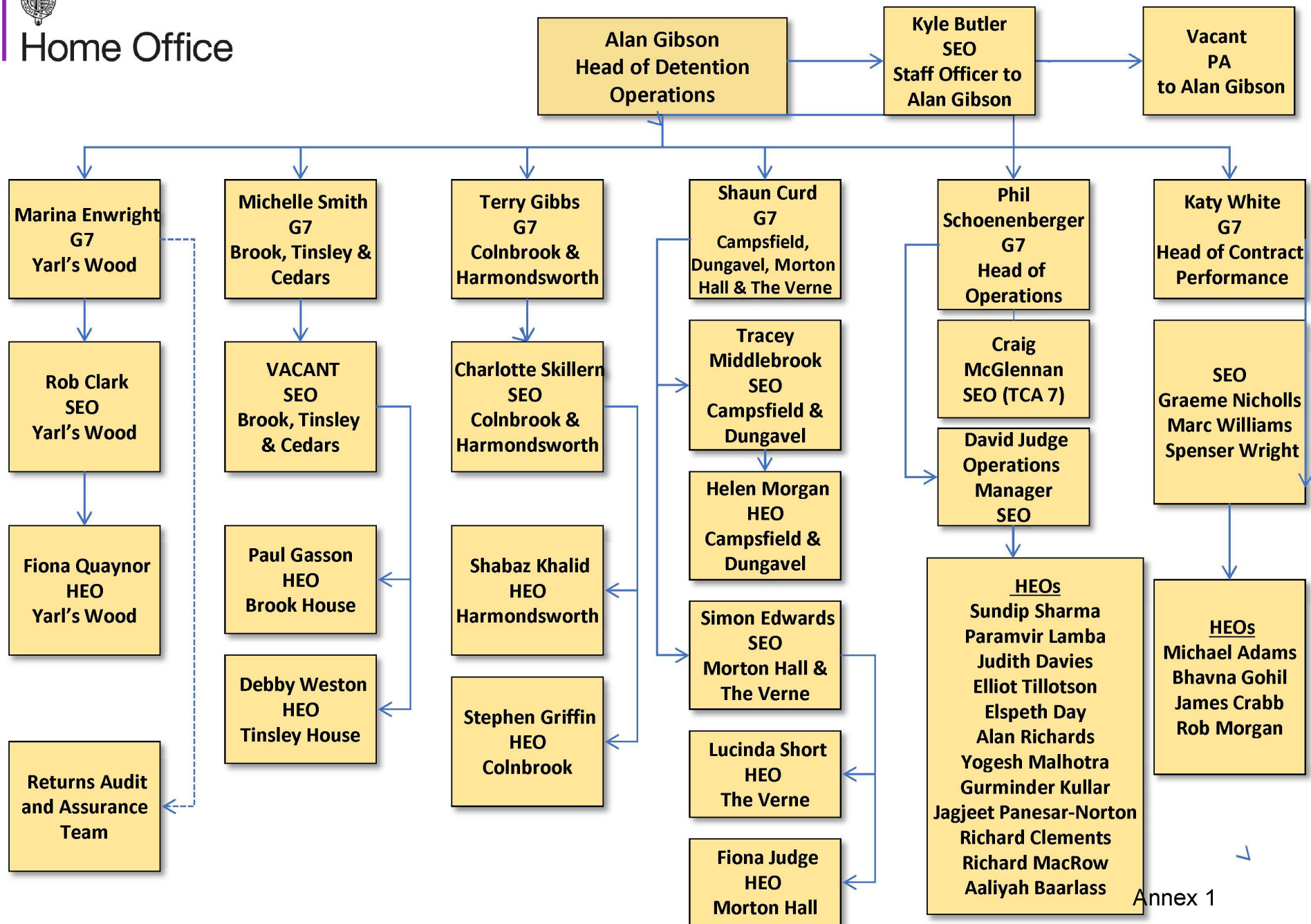
Sensitive/Irrelevant

Sensitive/Irrelevant



Home Office

11. Detention & Escorting Operations (2017)



Annex 1

Sensitive/Irrelevant

Sensitive/Irrelevant

Sensitive/Irrelevant

Sensitive/Irrelevant

Sensitive/Irrelevant

Sensitive/Irrelevant

Sensitive/Irrelevant

Sensitive/Irrelevant

Sensitive/Irrelevant

Sensitive/Irrelevant

Sensitive/Irrelevant

Sensitive/Irrelevant

Sensitive/Irrelevant

Sensitive/Irrelevant

Sensitive/Irrelevant

Sensitive/Irrelevant

Sensitive/Irrelevant

Sensitive/Irrelevant

Sensitive/Irrelevant

Sensitive/Irrelevant

Sensitive/Irrelevant

Sensitive/Irrelevant

Sensitive/Irrelevant