

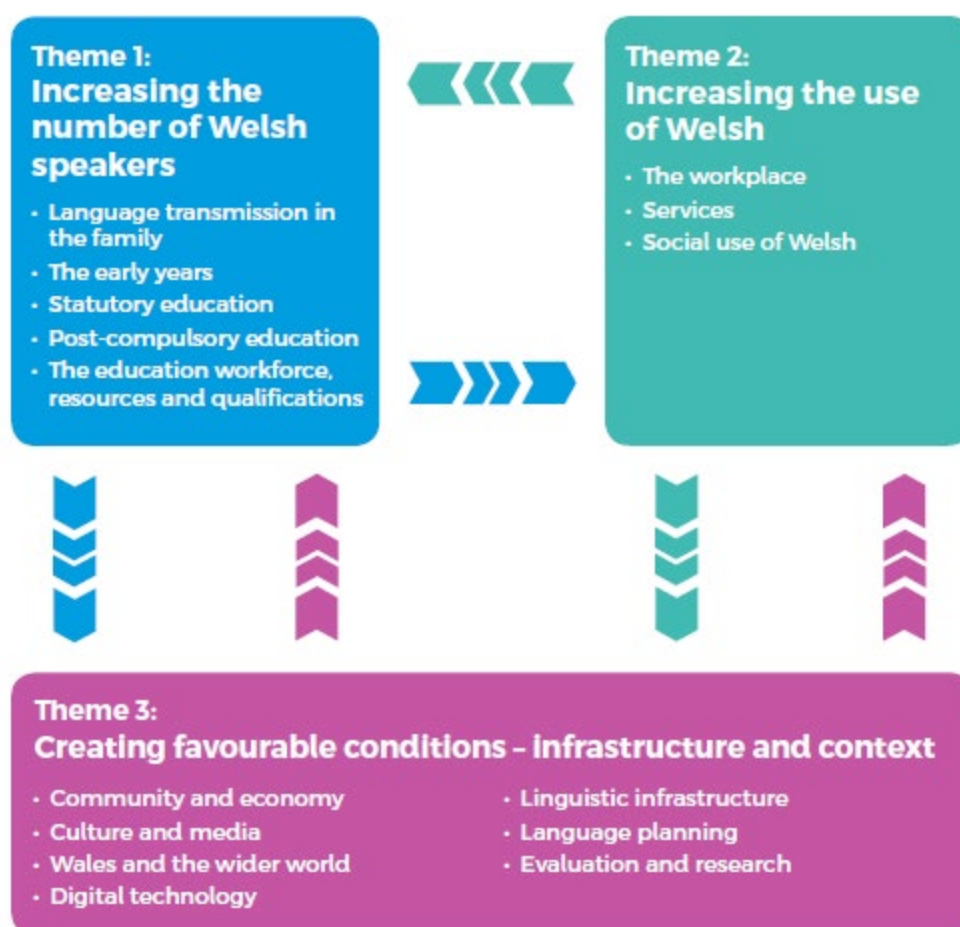
A. WELSH LANGUAGE IMPACT ASSESSMENT

Cymraeg 2050 is our national strategy for increasing the number of Welsh speakers to a million by 2050.

The Welsh Government is fully committed to the new strategy, with the target of a million speakers included in the *Taking Wales Forward* Programme for Government and *Prosperity for All: the national strategy*. A thriving Welsh language is also included in one of the 7 well-being goals in the Well-being of Future Generations (Wales) Act 2015.

We also have a statutory obligation to fully consider the effects of our work on the Welsh Language. This means that any Welsh Government policy should consider how our policies affect the language and those who speak it.

The *Cymraeg 2050* strategy has three themes:



The headings under each theme outline the scope of activities that can affect the language.

As a general rule, if your policy has the potential to impact on people, it will impact in some way on Welsh speakers and therefore on the Welsh language.

1. **Welsh Language Impact Assessment reference number** (completed by the Welsh Language Standards Team, email: Safonau.Standards@gov.wales):

N/A

2. **Does the proposal demonstrate a clear link with the Welsh Government's strategy for the Welsh language? – *Cymraeg 2050 A million Welsh speakers* and the related Work Programme for 2017-2021?**

Our recommendation to create a new regulatory framework for coal tip safety in Wales links to;

- Theme 2 relating to "Increasing the use of Welsh".
- Theme 3: creating favourable conditions – infrastructure and context.

Any recommendations accepted by the Welsh Government would need to be developed in accordance with the Welsh Language Standards (No 2) Regulations 2016/182 (W.76)

3. **Describe and explain the impact of the proposal on the Welsh language, and explain how you will address these impacts in order to improve outcomes for the Welsh language. How will the proposal affect Welsh speakers of all ages (both positive and/or adverse effects)? You should note your responses to the following in your answer to this question, along with any other relevant information:**

- ♦ **How will the proposal affect the sustainability of Welsh speaking communities¹ (both positive and/or adverse effects)?**

The impact of our recommendations on the Welsh language will be indirect but beneficial rather than adverse. The proposed primary legislation will be available in both Welsh and English, as it will be Welsh legislation. The current legislation, the Mines and Quarries (Tips) Act 1969, is UK Government legislation and therefore in English only.

We have recommended a new supervisory authority which would be a Welsh authority, operating in both languages. It would be charged with creating and maintaining a tip register which would include every coal tip.

¹ These can be close-knit rural communities, dispersed social networks in urban settings, and in virtual communities reaching across geographical spaces.

We have also recommended a system of tip agreements and orders, including tip maintenance agreements to be made with owners of lower risk tips. There are many types of tip owner, ranging from public authorities, large landowners and housing developers to small sheep farmers . We envisage that the maintenance agreements and supporting guidance would be available in Welsh.

As above, any recommendations accepted by the Welsh Government would need to adhere to the Welsh Language Standards Regulations.

We do not anticipate that our recommendations will have a significant impact on the sustainability of Welsh speaking communities.

- ♦ **How will the proposal affect Welsh medium education and Welsh learners of all ages, including adults (both positive and/or adverse effects)?**

We do not foresee either a positive or an adverse impact.

- ♦ **How will the proposal affect services² available in Welsh (both positive and/or adverse effects)? (e.g. health and social services, transport, housing, digital, youth, infrastructure, environment, local government etc.)**

We envisage a positive impact on services. The recommended regulatory framework provides a new opportunity for the coal tip safety regime to operate in English and Welsh, including provision of new services such as improved access to information. The proposed new supervisory authority would provide a more comprehensive oversight role in ensuring safety and keeping the public informed. We do not envisage any adverse effects.

- ♦ **How will you ensure that people know about services that are available in Welsh and are able to access and use them as easily as they can in English? What evidence / data have you used to inform your assessment, including evidence from Welsh speakers or Welsh language interest groups?**

Our proposals would need to be developed in accordance with the Welsh Language Standards. It will be for Welsh Government and the proposed supervisory authority to engage with people to publicise the new coal tip safety regime. We conducted a three month public consultation and received responses from a wide range of Welsh stakeholders before making our final recommendations. Some responses to the consultation were submitted in Welsh.

² The Welsh Language Strategy aims to increase the range of services offered to Welsh speakers, and to see an increase in use of Welsh-language services.

Similar existing authorities such as Natural Resources Wales are subject to the Welsh Language Standards (No2) Regulations 2016/182 (W.76).

♦ **What other evidence would help you to conduct a better assessment?**

Consultation responses included suggestions as to how to make the tip register more accessible, and included information about digital standards. We have passed this to the Welsh Government for further consideration following the publication of our report.

Principles guiding digital standards help to ensure that customer needs, which include the needs of Welsh speakers, are central in the design of the register. They also promote the Welsh language. See the 12 Digital Service Standards: <https://digitalpublicservices.gov.wales/toolbox/digital-service-standards/>.

♦ **How will you know if your policy is a success?**

The success of our project will in the short term be measured by the extent to which the recommendations made in our report are implemented. In the long term it will be judged by the experience of those impacted by the new regulatory system, including Welsh speakers.